

Cairo International Airport



Designed by : Ahmed Hussein

Ibanez

Cairo International Airport for Microsoft® Flight Simulator® 2004 & X

Endorsed and Adjusted by:



VATEG | VATSIM Egyptian vACC

2011

www.vateg.net

DISCLAIMER:

There is absolutely NO warranty or guarantee of any kind, expressed or implied, for any problems arising from the use of this scenery. This includes, but is not limited to, any hardware and/or software problems. All use of this scenery and its related files is at your own risk.

It is forbidden to earn Money with creations above. All distribution of mass (without authorization of the author) on every media or marketing of scenes above entailed automatically judicial prosecutions. Scenes above are protected by international laws of Copyright. This scenery was uploaded to be downloaded for the personal use of all simmers for **FREE**.

Airport Information:

Cairo International Airport (IATA: CAI, ICAO: HECA) is the busiest airport in Egypt and the primary hub for Star Alliance member Egypt Air. The airport is located to the north-east of the city around 15 kilometers (9.3 mi) from the business area of the city.

Cairo International is the second busiest airport in Africa after Tambo International Airport in South Africa. Over 65 airlines use Cairo airport (including charter airlines) and 9 cargo airlines. Egypt Air is the largest operator at the airport, holding 61% of the departure slots in 2009. With the assimilation of the carrier into Star Alliance in July 2008 the airport has the potential to be a major hub with its positioning between Africa, the Middle East and Europe (especially with facilities for the Airbus A380).

In 2010, the airport served 16.1 million passengers and handled just under 154,832 aircraft movements. Total airfreight tonnage handled at the airport in 2009 was approximately 274,550 tones.

The airport has three terminals, with the third (and largest) opened on 27 April 2009. Terminal 2 was closed in April 2010 for major renovation works to the building's structure and facilities. A third parallel runway replaced the crossing runway in 2010. Runway 05L/23R is 3,300 meters (10,800 ft) long, 05C/23C has a length of 4,000 meters (13,000 ft), and the new runway is designated as 05R/23L and is approx. 4,000 meters (13,000 ft). A new cargo terminal is also under construction.

In 2010, the airport was voted one of the three most improved airports in the 2010 Skytrax World Airport Awards.

Scenery Information:

The scenery was designed by Ahmed Hussein, and was released by late 2010, then, VATEG team started working on it to alter and adjust the fine details, and added the ILS for the new runway 05R/23L according to the latest charts.

The scenery has the correct airport layout as of March 2011, including current parking bays, all 3 terminals and taxiways. It also includes custom made models, i.e.: Hangers, Light poles, Billboards, Signs. Moreover, Gates are correctly assigned so that you could enjoy flying using it, even offline.

Requirements:

This scenery version is released in the form of three variants, a low resolution, a high resolution and an AFCAD variant.

The AFCAD variant simply gives you the layout, without any change in the buildings itself. The low-resolution variant, gives you the whole scenery experience but without the Terminal 1 building. The high-resolution variant, gives you the FULL experience out of the scenery.

For the AFCAD variant, you don't need to have any specific system; you only need to be able to run your flight simulator! ☺

For the Low-Resolution, the recommended requirements are a triple-core processor with a 1GB DRR3 Graphics card and 2GBs of RAM. Finally, for the High-Resolution, the recommended requirements are a quad-core processor with 1GB DRR3 Graphics card and 2GBs of RAM.

Note: Recommendations are based on maximized display options used in Flight Simulator 9/X.

Installation:

If you are using the AFCAD variant, put the folder (Cairo2011_AFCAD1.0) in your Flight Simulator 9\Addon Scenery directory.

If you are using the high resolution scenery, put the folder (Cairo2011_High1.0) in your Flight Simulator 9\Addon Scenery directory.

If you are using the low resolution scenery, put the folder (Cairo2011_Low1.0) in your Flight Simulator 9\Addon Scenery directory.

Please, then. Add the scenery folder to your scenery database by clicking, in your flight simulator, <SETTINGS> <SCENERY LIBRARY>. There click the <ADD AREA>

button and choose the folder where you installed Cairo scenery at. Note: You need to restart FS2004 for the changes to take effect.

De-installation:

First, please remove the scenery folder from your scenery database by clicking, in your flight simulator, <SETTINGS> <SCENERY LIBRARY>. There select the scenery from the list and click on <REMOVE> button. Close your flight simulator and follow the following steps according to your scenery version.

For the AFCAD variant, remove the folder (Cairo2011_AFCAD1.0) from your Flight Simulator 9\Addon Scenery directory.

For the high resolution scenery, remove the folder (Cairo2011_High1.0) from your Flight Simulator 9\Addon Scenery directory.

For the low resolution scenery, remove the folder (Cairo2011_Low1.0) from your Flight Simulator 9\Addon Scenery directory.

Credits:

Main Designer..... Ahmed Hussein
VATEG Editor..... Mohamed Abdel Wahed
Special thanks to..... ALL Testers

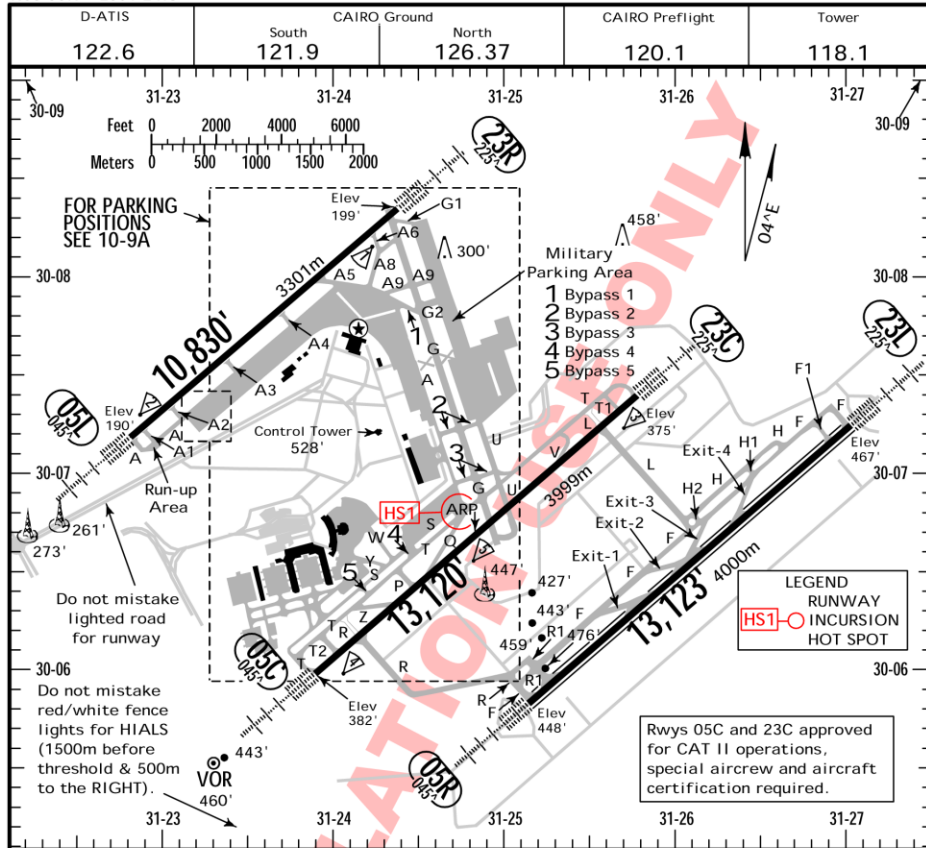
How to find help:

Contact us on our VATEG website www.vateg.net. Describe your problem in as much detail as you can. We must be able to follow your instructions step-by-step in order to recreate the same problem on our PCs. Please note that we do not provide any kind of technical support, but we will try to help you.

Cairo International Airport 2011 Scenery, v1.0

The Scenery was designed according to the following charts:

HECA/CAI CAIRO, EGYPT
 Apt Elev 467' 7 JAN 11 (10-9) CAIRO INTL
 N30 06.7 E031 24.8



ADDITIONAL RUNWAY INFORMATION

RWY	USABLE LENGTHS	LANDING	BEYOND		TAKE-OFF	WIDTH
			Threshold	Glide Slope		
05L 23R	HIRL (60m) CL (30m) HIALS TDZ PAPI(3.0°) 6 RVR		9554'	2912m		197' 60m
05C 23C	HIRL (60m) CL (30m) HIALS TDZ PAPI(3.0°) 6 RVR		12,269'	3740m		197' 60m
05R 23L	HIRL (60m) CL (30m) HIALS TDZ PAPI(3.0°)		12,029'	3667m		197' 60m

6 HST-V

RUNWAY INCURSION HOT SPOTS

(For information only, not to be construed as ATC instructions.)

[HS1] When directed to Rwy 05C holding position via Twy A and Twy T, beware to enter Twy Q at HS1.

TAKE-OFF

	AIR CARRIER (JAA) All Rwys			AIR CARRIER (FAR 121) Rwy 05C, 23C Rwy 05L, 23R All Rwys		
	RL & CL	RCLM (DAY only) or RL	RCLM (DAY only) or RL	CL & RCLM any RVR out, other two req.	CL & RCLM two RVR operating	Adequate Vis Ref
A				2 Eng		
B	200m (150m)	250m	400m	TDZ RVR 200m Mid RVR 200m	TDZ RVR 200m Roll out RVR 150m	RVR 500m VIS 400m
C				3 & 4 Eng		
D	250m (200m)	300m				

**FOR
SIMULATION
USE ONLY
NOT FOR
REALLIFE
NAVIGATION**

**FOR
SIMULATION
USE ONLY
NOT FOR
REALLIFE
NAVIGATION**

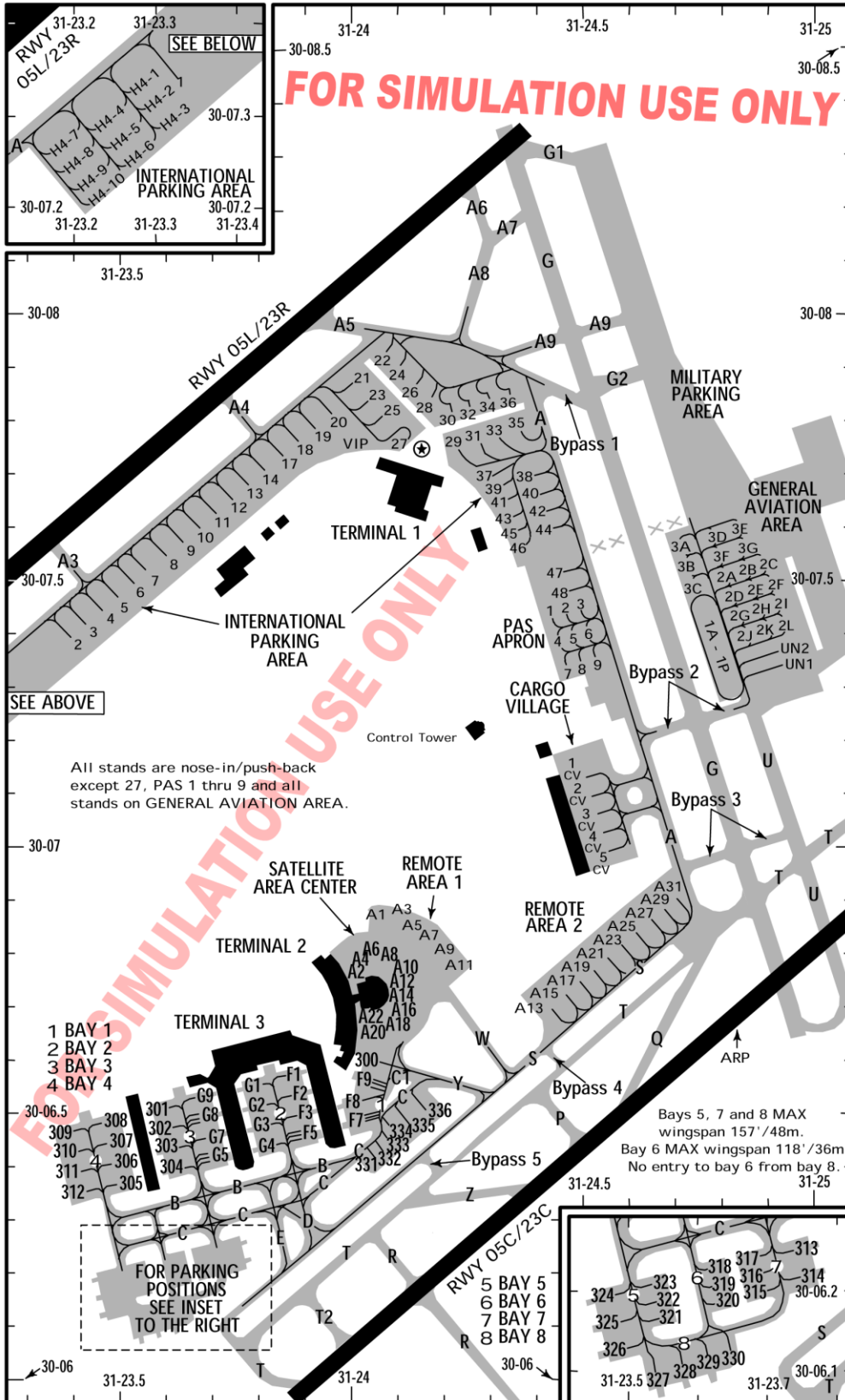
**FOR
SIMULATION
USE ONLY
NOT FOR
REALLIFE
NAVIGATION**

HECA/CAI

CAIRO, EGYPT

7 JAN 11 10-9A

CAIRO INTL



**FOR
SIMULATION
USE ONLY
NOT FOR
REALLIFE
NAVIGATION**

**FOR
SIMULATION
USE ONLY
NOT FOR
REALLIFE
NAVIGATION**

**FOR
SIMULATION
USE ONLY
NOT FOR
REALLIFE
NAVIGATION**